



# WSCF

WORLD STUDENT CHRISTIAN FEDERATION

## AFRICA REGION

“The Bible in one hand, the newspaper in another:  
SCMs for Justice and Peace”

# FORMATION OF THE WSCF

The World Student Christian Federation (WSCF) was founded on the 17th to the 19th of August 1895 in Vadstena, Sweden by six men, representing Student Christian Movement from:

- John R. Mott (USA)
- J.R. Williamson (Britain)
- J. Siemsen (Germany)
- Rev. K.M. Eckhoff (Norway)
- Dr. Fries (Sweden)
- L.S. Wishard (mission lands)



# VISION AND MISSION OF WSCF

WSCF was founded with the aim of uniting movements or associations of Christian students throughout the world. The WSCF is a global community of Student Christian Movements committed to dialogue, ecumenism, social justice and peace.

Through the work of the Holy Spirit, the WSCF is called to be a prophetic witness in Church and Society. It also seeks to promote cooperation among young people in working and advocating for socio-economic justice, peace, human rights and responsible and accountable leadership in the world.

WSCF provides a forum for Christian formation,

witness, ministry and ecumenical dialogue across cultures, gender and race. It does so through engaging students in study and analysis of social, political and economic issues and action from an informed Christian perspective.

Our mission is to empower students in critical thinking and constructive transformation of our world by being a space for:

- Prayer and celebration
- Theological reflection
- Study and analysis of social and cultural processes and
- Solidarity and action across boundaries of culture, gender and ethnicity.



THROUGH THE WORK  
OF THE HOLY SPIRIT, THE  
WSCF IS CALLED TO BE A  
PROPHETIC WITNESS IN  
CHURCH AND SOCIETY.



# OBJECTIVES OF WSCF

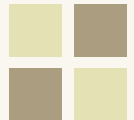
- To call members to faith in God the Father, Son and Holy Spirit according to the scriptures and to encourage discipleship within the life and mission of the Church.
- To help them to grow in Christian life through prayer, study of the Bible and participation in the worship and witness of the Church
- To help them to witness Jesus Christ in the academic community
- To bring them into fellowship with one another in mutual service and to support efforts to serve all students in their needs
- To help members strive for peace and justice in and among nations.
- To help members work towards unity within the Church.
- To help them to be servants and messengers

of God's Kingdom in all the world  
The Federation is organized into six regions, each with its own regional office. The regions and the locations of their regional offices are as follows: Africa (Nairobi), Asia Pacific (Hong Kong), Europe (Budapest), Latin America and the Caribbean (Buenos Aires), Middle East (Lebanon) and North America (Toronto). The regional offices are headed by the Regional Secretaries and supported by the regional staff.

The Africa Regional Office coordinates the efforts of 24 national movements across the continent.



THE FEDERATION IS  
ORGANIZED INTO SIX  
REGIONS, EACH WITH  
ITS OWN REGIONAL  
OFFICE.



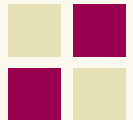
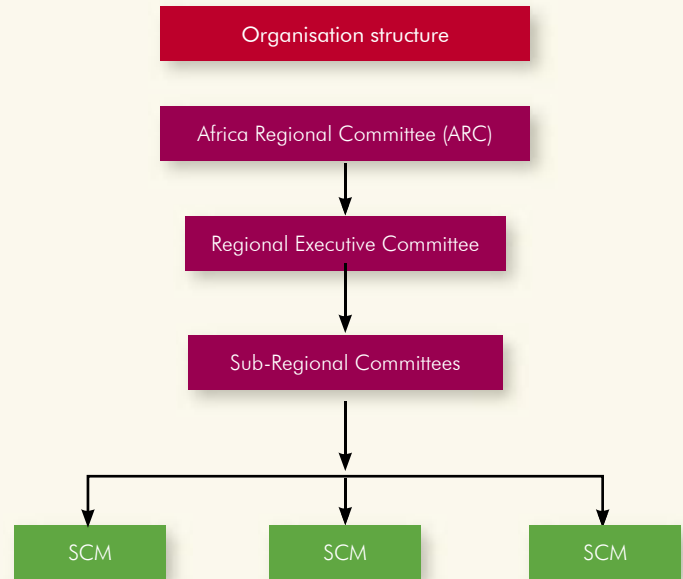
# WSCF AFRICA REGION ACTIVITIES

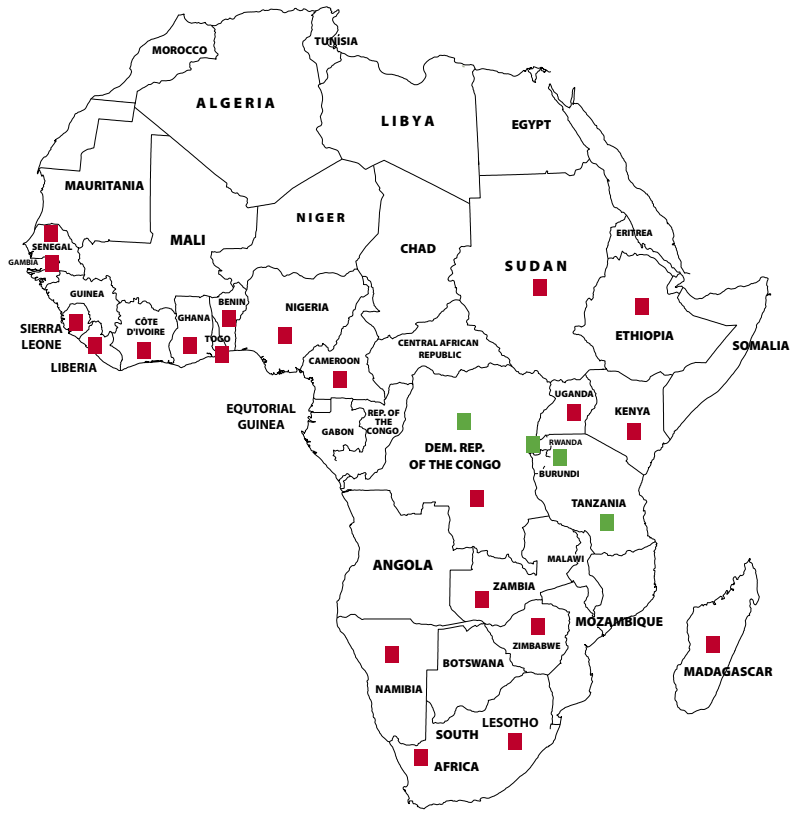
Some of the main areas of work in Africa for the past year are:

- Bible study, theology and interfaith relations.
- Leadership development.
- Gender equality and women's empowerment.
- Campaign against HIV/AIDS.
- Peace-building and conflict transformation.
- Economic Justice programme
- Internship and exchange programme.
- Fight against corruption
- Challenge of higher education

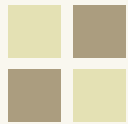
## Ecumenical Partners

- WCC (World Council of Churches)
- AACC ( All Africa Conference of Churches)
- Procmura ( Programme for Christian-Muslim Relations in Africa)
- IMCS ( International Movements of Catholic Students)
- Christian Councils in some countries





KEY  
 ■ Affiliated  
 ■ Associated



# WSCF Movements

- Jeunesse Chrétienne Universitaire et Scolaire du Bénin (JCUSB)
- Département des Jeunes, Eglise Episcopale du Burundi
- Mouvement des Etudiants Protestants du Cameroun (MEPC), Cameroun
- Association Chrétienne des Elèves et Etudiants Protestants de Côte d'Ivoire (ACEEPCI)
- Ethiopian Students' Association (HAESA)
- SCM of Gambia
- SCM of Ghana
- Student Christian Movement of Kenya
- SCM of Lesotho
- National Student Christian Council of Liberia
- Mpiantra Kristiana Malgasi (MPI.KRI.MA) Madagascar
- SCM Namibia
- SCM of Nigeria
- Federation Nationale des Jeunes Protestants (FNJP)
- Association des Jeunes et des Etudiants Chrétiens (AJEC), DRC
- Mouvement des Etudiants au Service Social du Rwanda (MESSORWA)
- Rassemblement de la Jeunesse Estudiantine Protestante à l'Action (RAJEPRA), Rwanda
- Mouvement des Jeunes de l'Eglise Protestante du Sénégal (MJEPS)
- Federation of South Africa Christian Students (FEDSACS), South Africa
- Sudanese Student Christian Mission (SSCM), New Sudan
- Tanzania Student Christian Fellowship (TSCF)
- Association Chrétienne des Elèves et Etudiants du Togo (ACEET)
- The Youth Department, Church of Uganda
- Zambia SCM
- Zimbabwe SCM





**WSCF – Africa Regional Office**

Jumuia Place, Lenana Road

Box : 14782 – 00800 Nairobi, Kenya

Tel ; +254 20 27 30 222/0

Fax : +254 20 27 30 223

Email : [wscf@wscf-africa.org](mailto:wscf@wscf-africa.org)

Website : [www.wscf-africa.org](http://www.wscf-africa.org)

*WSCF is a non-governmental organisation in operational relationships with UNESCO and has consultative status with the United Nations (Category II)*